



EMPOWER YOUR IDENTITY



Manufacturer & Supplier Of Uniform Fabrics | Our Dealer Network Across India & Abroad

GLOBAL NEST

(KNIT WEAR)



EMPOWER YOUR IDENTITY
WITH Valji KNITTING FABRICS



DARSHAN



EMPOWER YOUR IDENTITY

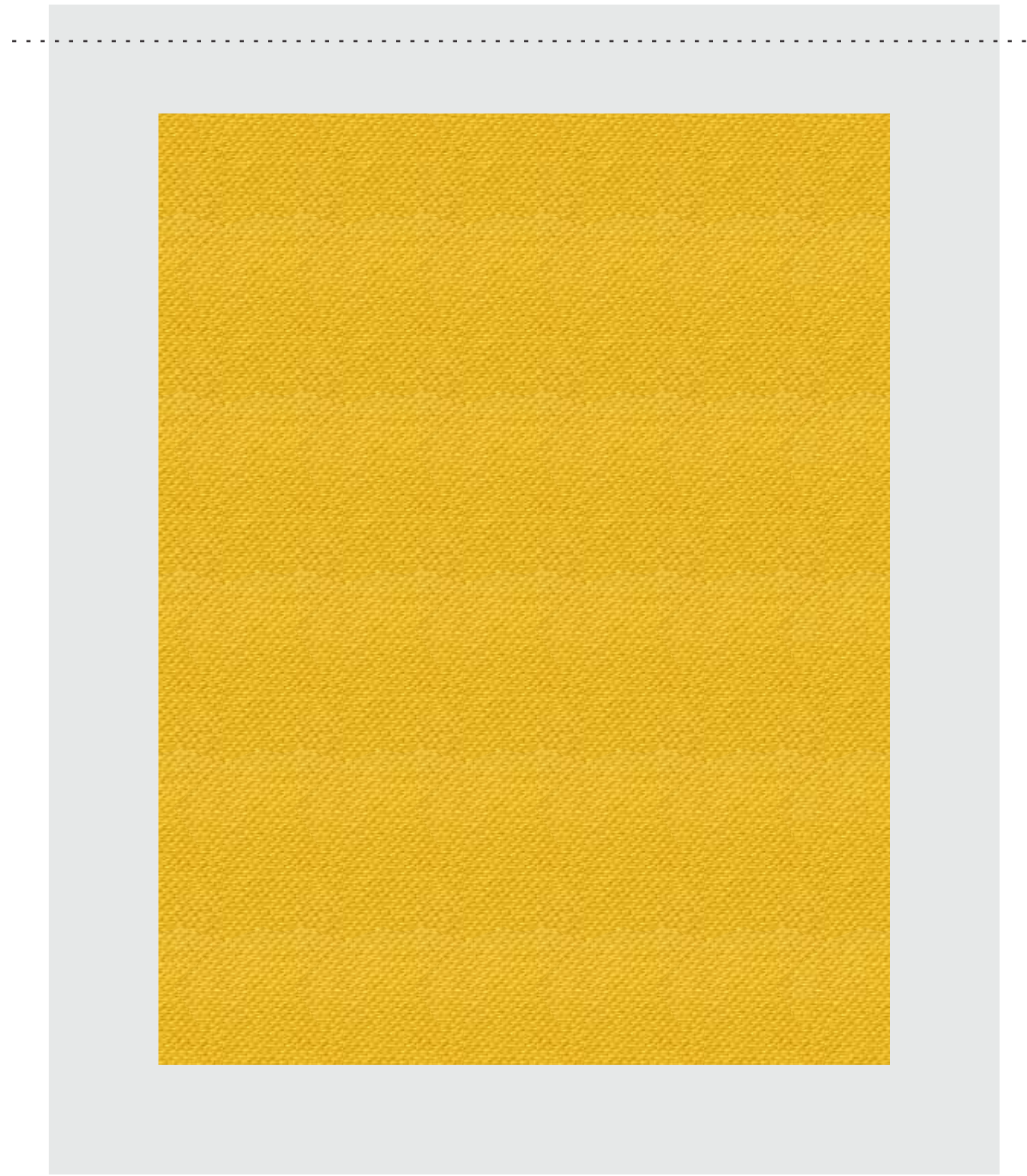


| | | |
|----|---------------|----|
| 1 | EVERSOFT | |
| | BINAKA | 5 |
| 7 | RAWCOT | |
| | NOBLE | 9 |
| 11 | VISTA | |
| | EVOLVE VORTEX | 13 |
| 15 | TEEHUG VORTEX | |
| | KITKAT | 17 |
| 19 | WINSITE | |
| | SPIKEFOX | 21 |
| 23 | VECTOR | |
| | CLOSET LYCRA | 25 |
| 27 | OSCAR | |
| | MOON ROCK | 29 |
| 39 | MOON LIGHT | |
| | STAR ZONE | 40 |

EVERSOFT

Dia 46-48" GSM 210/220 BLEND 48/52-P/C STRUCTURE PIQUE

COMPACTION PROCESSED FABRIC



EVERSOFT

Dia 46-48" GSM 210/220 BLEND 48/52-P/C STRUCTURE PIQUE

COMPACTION PROCESSED FABRIC



DARSHAN



EVERSOFT

| | | | | | | | |
|-----|--------|-----|---------|-------|-----------|-----------|-------|
| Dia | 46-48" | GSM | 210/220 | BLEND | 48/52-P/C | STRUCTURE | PIQUE |
|-----|--------|-----|---------|-------|-----------|-----------|-------|

COMPACTION PROCESSED FABRIC



153 Dark (T BLUE)



154 Dark (WINE)



155 Dark (DENIM BLUE)



156 Dark (ANTHRA MILANGEL)



157 Dark (PURPLE)



201 Super Dark (MAROON)



202 Super Dark (B GREEN)



203 Super Dark (NAVY BLUE)



204 Super Dark (BLACK)



205 Super Dark (RED)



206 Super Dark (R BLUE)

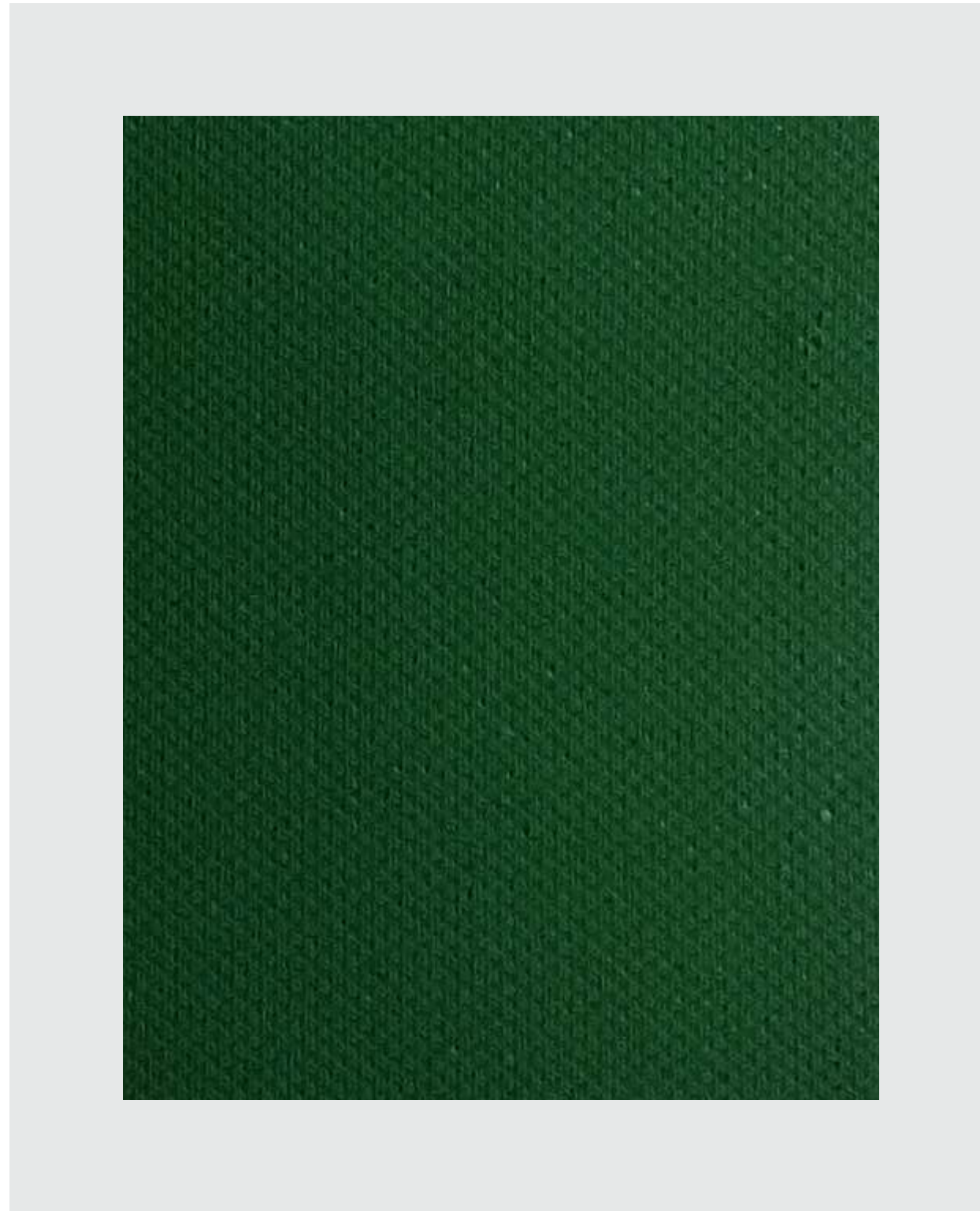


207 Super Dark (P GREEN)

BINAKA

Dia 46-48" GSM 250/260 BLEND 48/52-P/C STRUCTURE PIQUE

COMPACTION PROCESSED FABRIC



BINAKA

Dia 46-48" GSM 250/260 BLEND 48/52-P/C STRUCTURE PIQUE

COMPACTION PROCESSED FABRIC



01 (WHITE)



52 Light (MILANGE)



104 Medium (GOLD)



105 Medium (ORANGE)



106 Medium (YELLOW)



156 Dark (ANTHRA MILANGEL)



201 Super Dark (MAROON)



203 Super Dark (NAVY BLUE)



204 Super Dark (BLACK)



205 Super Dark (RED)



206 Super Dark (R BLUE)

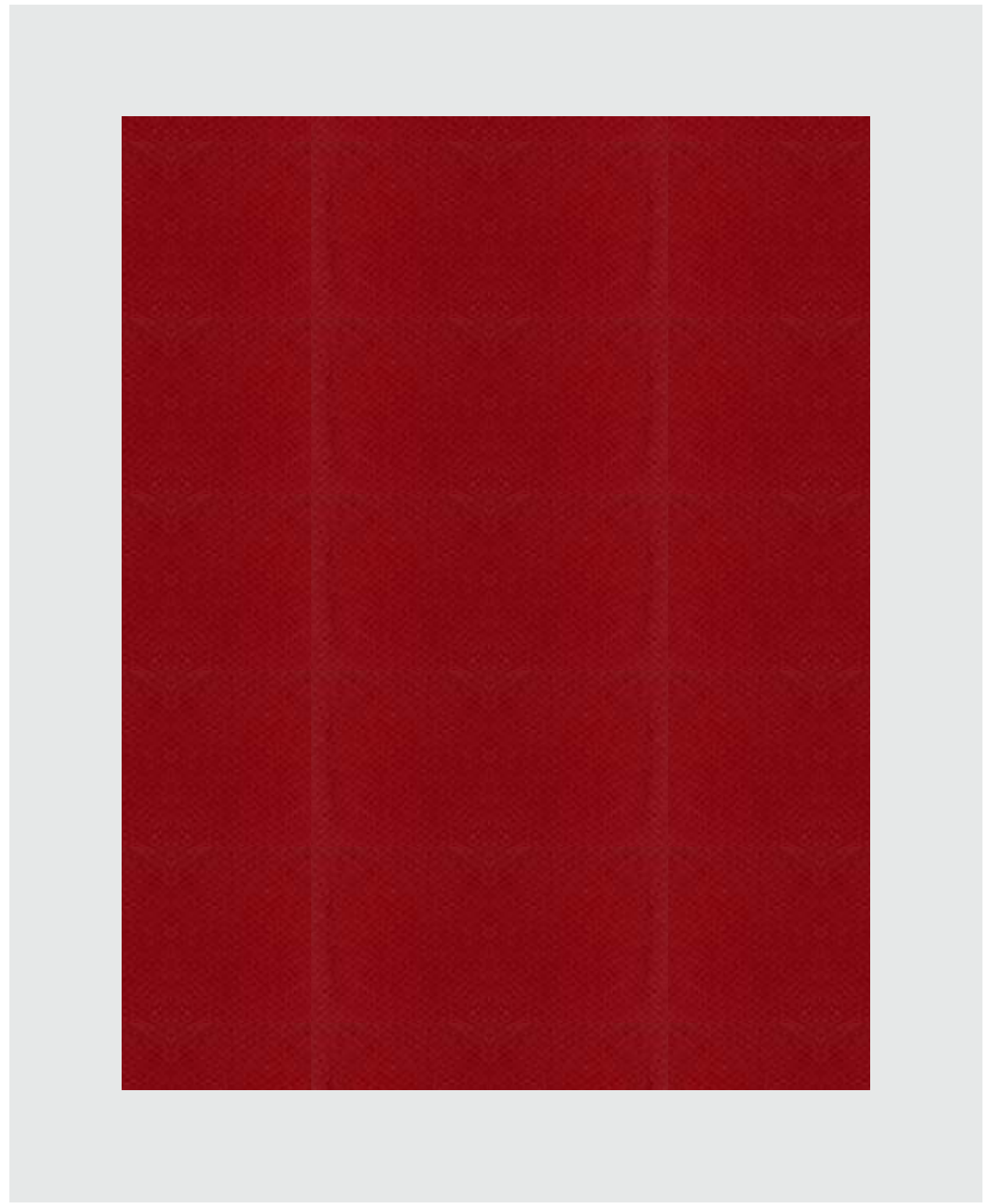


207 Super Dark (P GREEN)

RAWCOT

Dia 41-42" GSM 210/220 BLEND 65/35-P/C STRUCTURE PIQUE

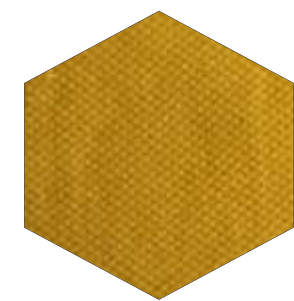
FRONT SIDE POLYESTER / BACK SIDE COTTON COMPACTION PROCESSED FABRIC



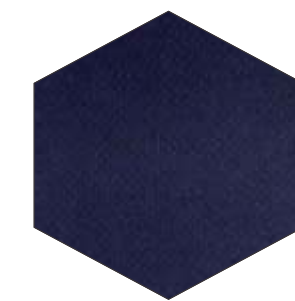
RAWCOT

Dia 41-42" GSM 210/220 BLEND 65/35-P/C STRUCTURE PIQUE

FRONT SIDE POLYESTER / BACK SIDE COTTON COMPACTION PROCESSED FABRIC



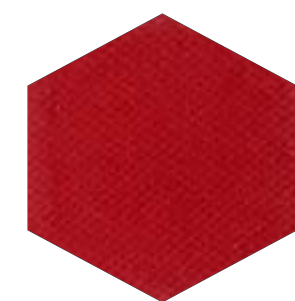
104 Medium (GOLD)



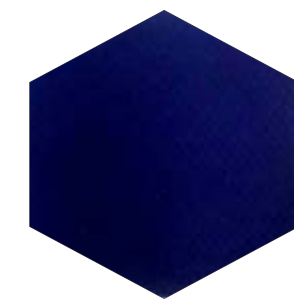
203 Super Dark (NAVY BLUE)



204 Super Dark (BLACK)



205 Super Dark (RED)



206 Super Dark (R BLUE)



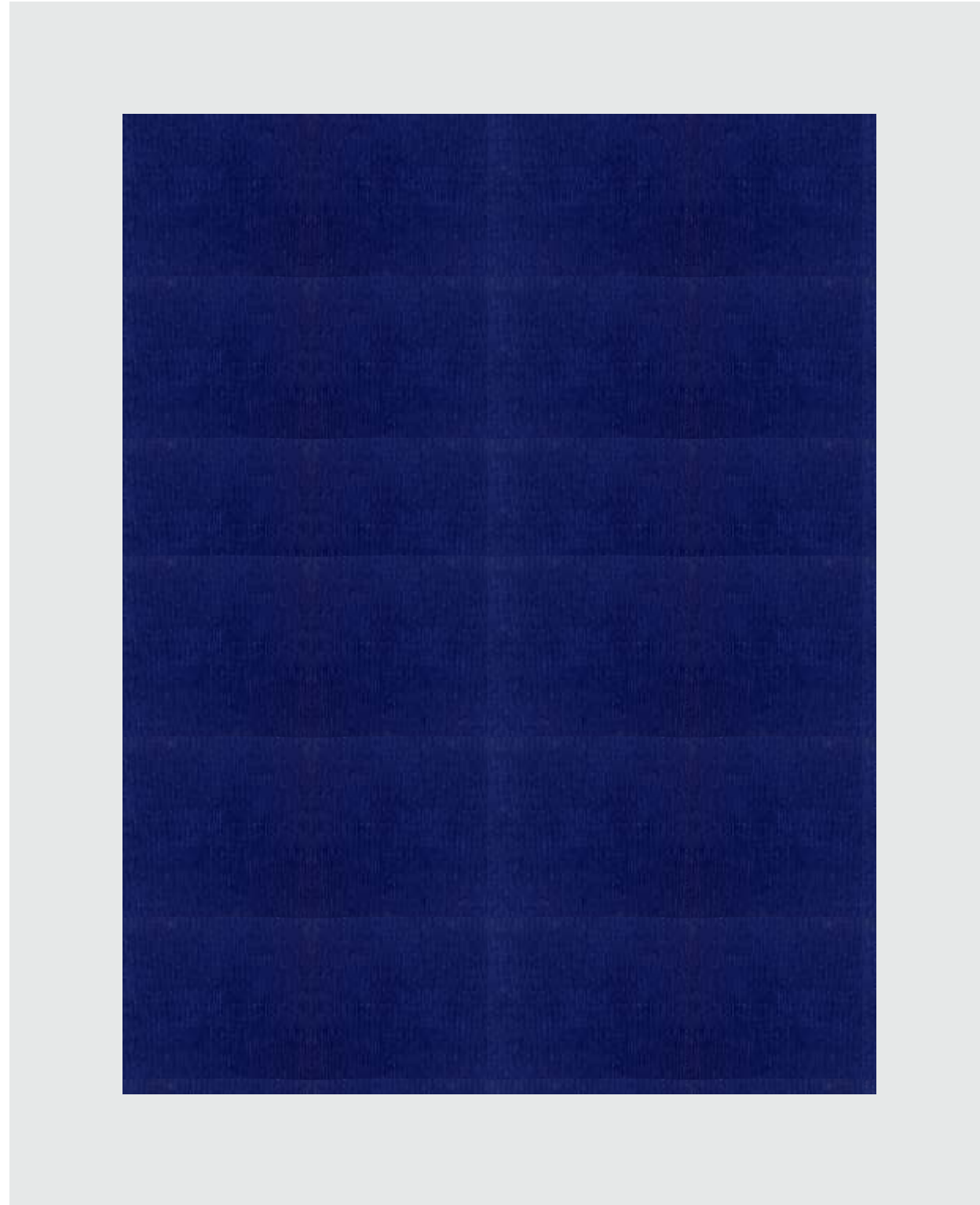
207 Super Dark (P GREEN)

NOBLE

Dia 46-48" GSM 220/230 BLEND 48/52 - PC STRUCTURE INTER LOCK

FOR TOPS & LOWERS

COMPACTION PROCESSED FABRIC

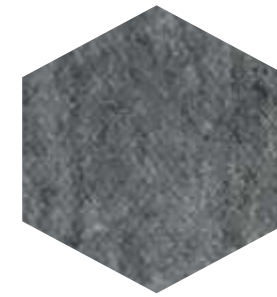


NOBLE

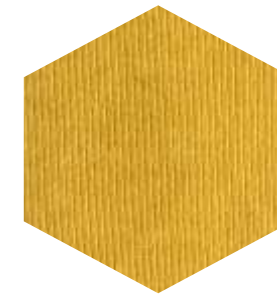
Dia 46-48" GSM 220/230 BLEND 48/52 - PC STRUCTURE INTER LOCK

FOR TOPS & LOWERS

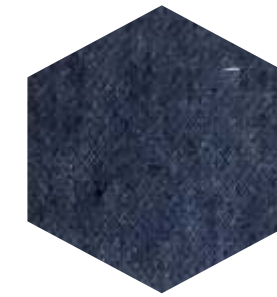
COMPACTION PROCESSED FABRIC



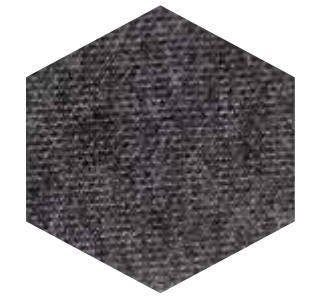
52 Light
(GREY MILANGE)



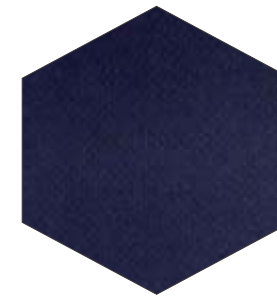
104 Medium
(GOLD)



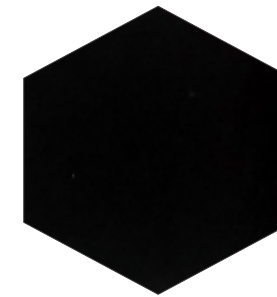
107 Medium
(DENIM MILANGE)



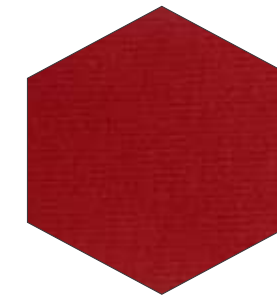
156 Dark
(ANTHRA MILANGE)



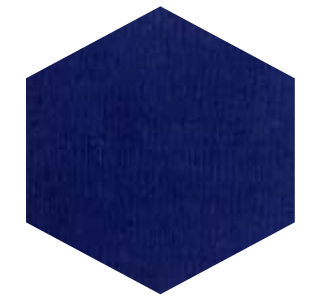
203 Super Dark
(NAVY BLUE)



204 Super Dark
(BLACK)



205 Super Dark
(RED)



206 Super Dark
(R BLUE)



207 Super Dark
(P GREEN)

VISTA

Dia 41-42" GSM 190/200 BLEND 48/52 - PC STRUCTURE SINKER

FOR TOPS & LOWERS

COMPACTION PROCESSED FABRIC



VISTA

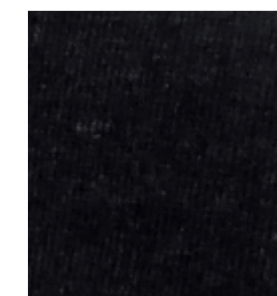
Dia 41-42" GSM 190/200 BLEND 48/52 - PC STRUCTURE SINKER

FOR TOPS & LOWERS

COMPACTION PROCESSED FABRIC



52 Light
(GREY MILANGE)



156 DARK
(ANTHRA MILANGE)

EVOLVE VORTEX

Width 58-60" GSM 190/200 BLEND 100% POLY VORTEX STRUCTURE POLO KNIT

MOISTURE MANAGEMENT TREATED



EVOLVE VORTEX

Width 58-60" GSM 190/200 BLEND 100% POLY VORTEX STRUCTURE POLO KNIT

MOISTURE MANAGEMENT TREATED



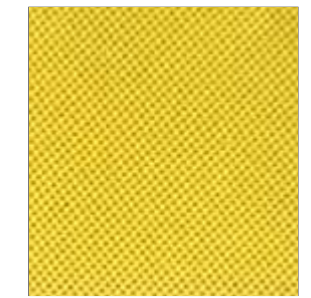
01 (WHITE)



104 Medium (GOLD)



105 Medium (ORANGE)



106 Medium (YELLOW)



108 Medium (GREY)



156 Dark (ANTHRA)



201 Super Dark (MAROON)



203 Super Dark (NAVY BLUE)



204 Super Dark (BLACK)



205 Super Dark (RED)



206 Super Dark (R BLUE)



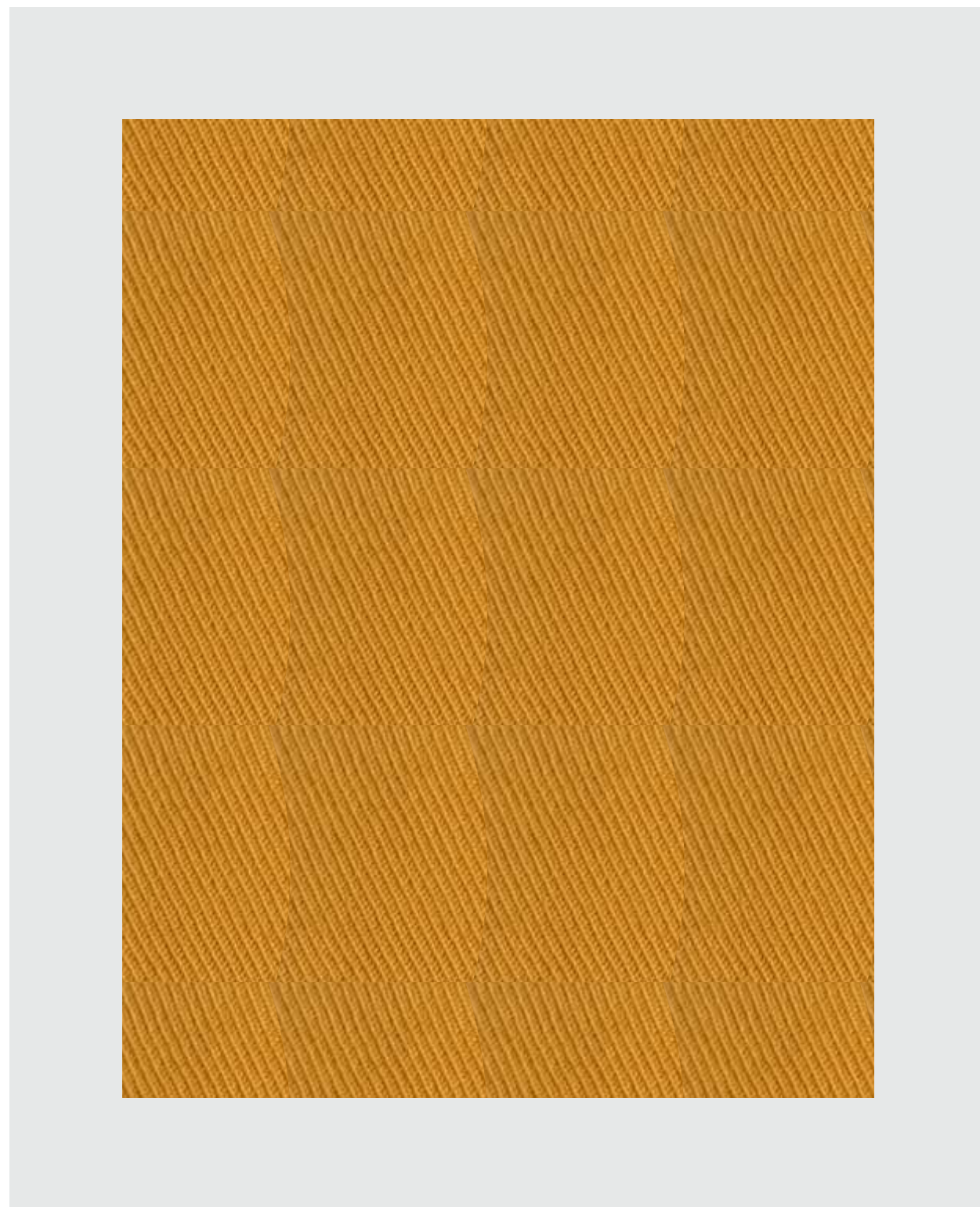
207 Super Dark (P GREEN)



TEEHUG VORTEX

Width 58-60" GSM 180/190 BLEND 100% POLY VORTEX STRUCTURE DIAGONAL TWILL

MOISTURE MANAGEMENT TREATED



TEEHUG VORTEX

Width 58-60" GSM 180/190 BLEND 100% POLY VORTEX STRUCTURE DIAGONAL TWILL

MOISTURE MANAGEMENT TREATED



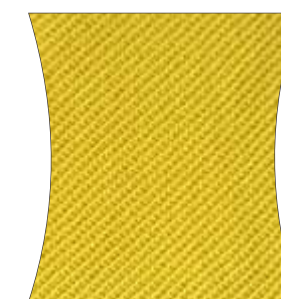
01 (WHITE)



104 Medium (GOLD)



105 Medium (ORANGE)



106 Medium (YELLOW)



108 Medium (GREY)



156 Dark (ANTHRA)



201 Super Dark (MAROON)



203 Super Dark (NAVY BLUE)



204 Super Dark (BLACK)



205 Super Dark (RED)



206 Super Dark (R BLUE)



207 Super Dark (P GREEN)



KITKAT

Width 58-60" GSM 180/190 BLEND 100% POLYESTER STRUCTURE SJ KNIT

MOISTURE MANAGEMENT TREATED



KITKAT

Width 58-60" GSM 180/190 BLEND 100% POLYESTER STRUCTURE SJ KNIT

MOISTURE MANAGEMENT TREATED



104 Medium (GOLD)



105 Medium (ORANGE)



108 Medium (GREY)



203 Super Dark (Navy Blue)



205 Super Dark (RED)



206 Super Dark (R BLUE)



207 Super Dark (P GREEN)

WINSITE

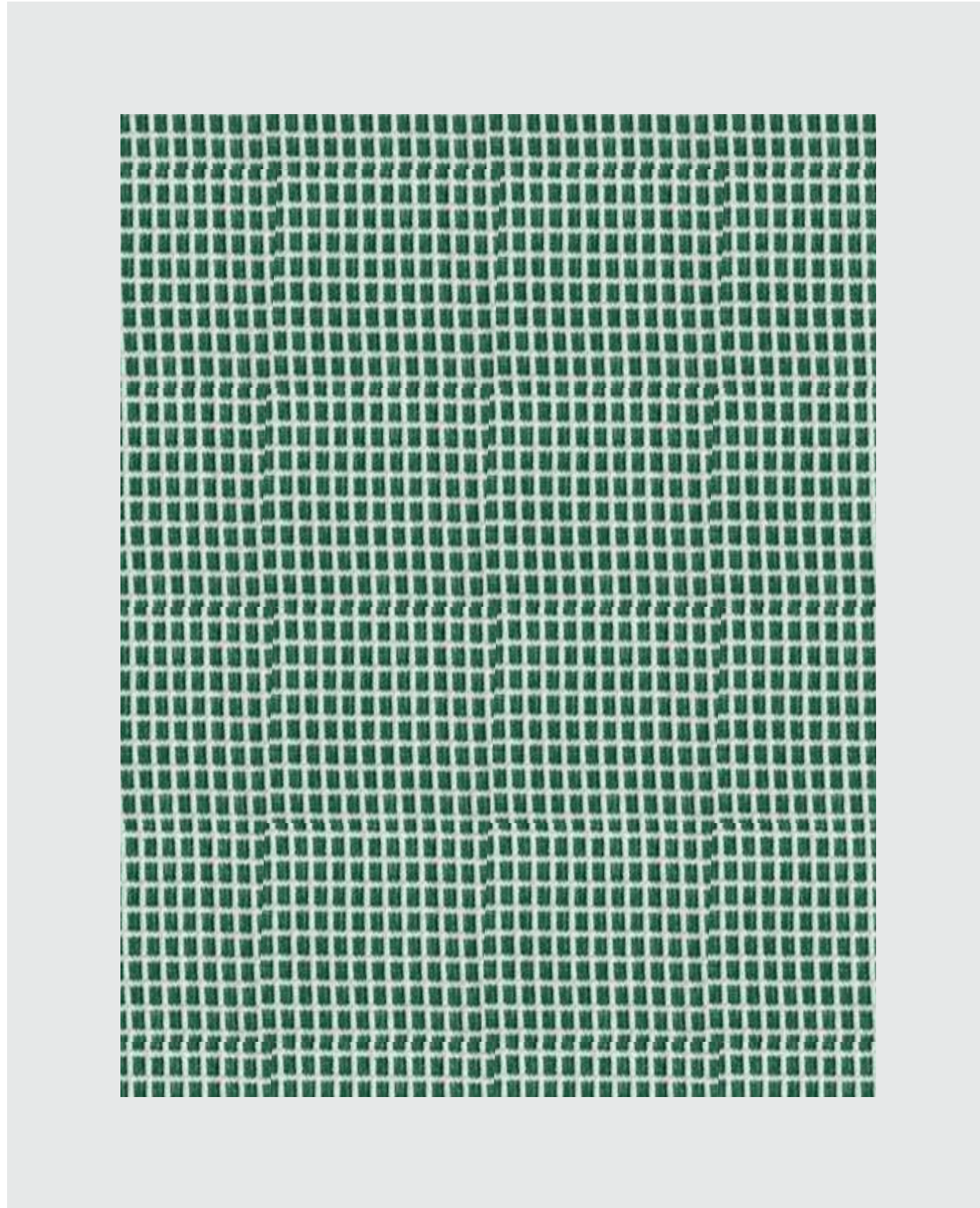
Width 58-60"

GSM 180/190

BLEND 100% POLYESTER

STRUCTURE SJ KNIT

MOISTURE MANAGEMENT TREATED



WINSITE

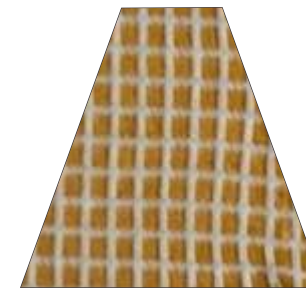
Width 58-60"

GSM 180/190

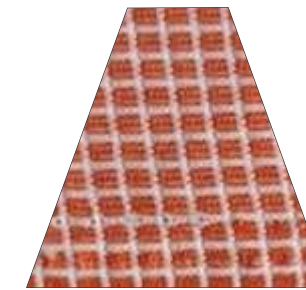
BLEND 100% POLYESTER

STRUCTURE SJ KNIT

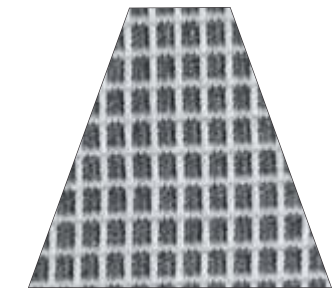
MOISTURE MANAGEMENT TREATED



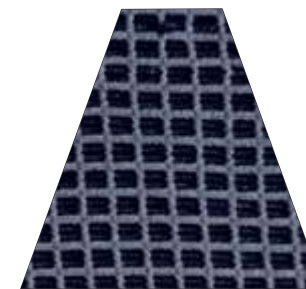
104 Medium (GOLD)



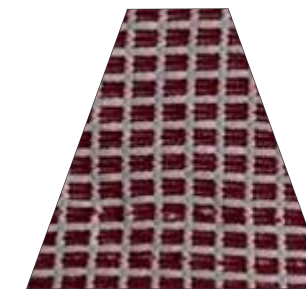
105 Medium (ORANGE)



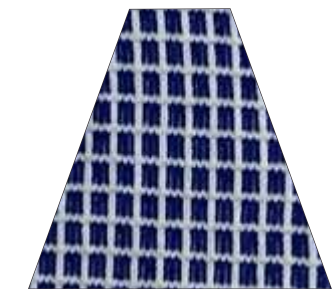
108 Medium (GREY)



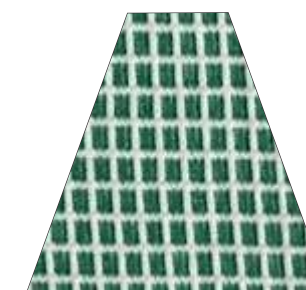
203 Super Dark (Navy Blue)



205 Super Dark (RED)



206 Super Dark (R BLUE)



207 Super Dark (P GREEN)

SPIKEFOX

Width 58-60" GSM 190/200 BLEND 100% POLYESTER STRUCTURE FANCY KNIT

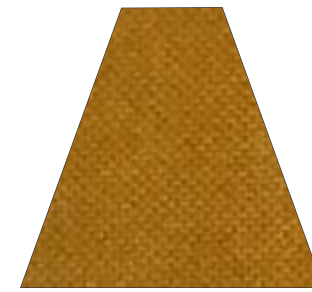
MOISTURE MANAGEMENT TREATED



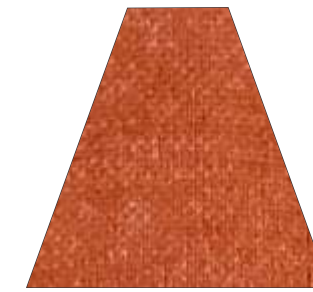
SPIKEFOX

Width 58-60" GSM 190/200 BLEND 100% POLYESTER STRUCTURE FANCY KNIT

MOISTURE MANAGEMENT TREATED



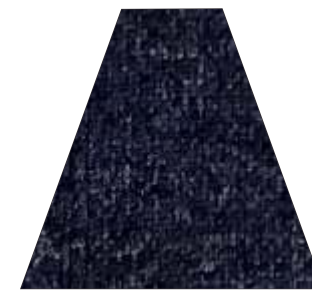
104 Medium (GOLD)



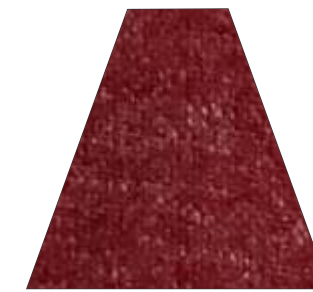
105 Medium (ORANGE)



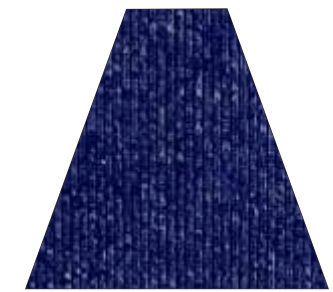
108 Medium (GREY)



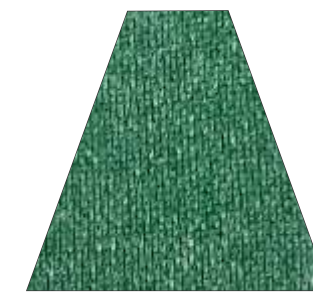
203 Super Dark (Navy Blue)



205 Super Dark (RED)



206 Super Dark (R BLUE)



207 Super Dark (P GREEN)

VECTOR

Width 58-60" GSM 220/230 BLEND 100% POLYESTER STRUCTURE TWILL

BOTTOM WEAR FABRIC

MOISTURE MANAGEMENT TREATED



VECTOR

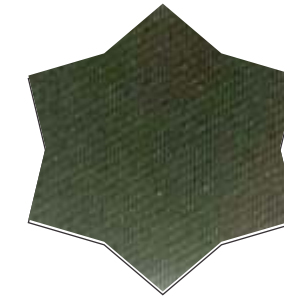
Width 58-60" GSM 220/230 BLEND 100% POLYESTER STRUCTURE TWILL

BOTTOM WEAR FABRIC

MOISTURE MANAGEMENT TREATED



156 Dark (ANTHRA)



158 DARK (MEHNDI)



201 Super Dark (MAROON)



203 Super Dark (NAVY BLUE)



204 Super Dark (BLACK)



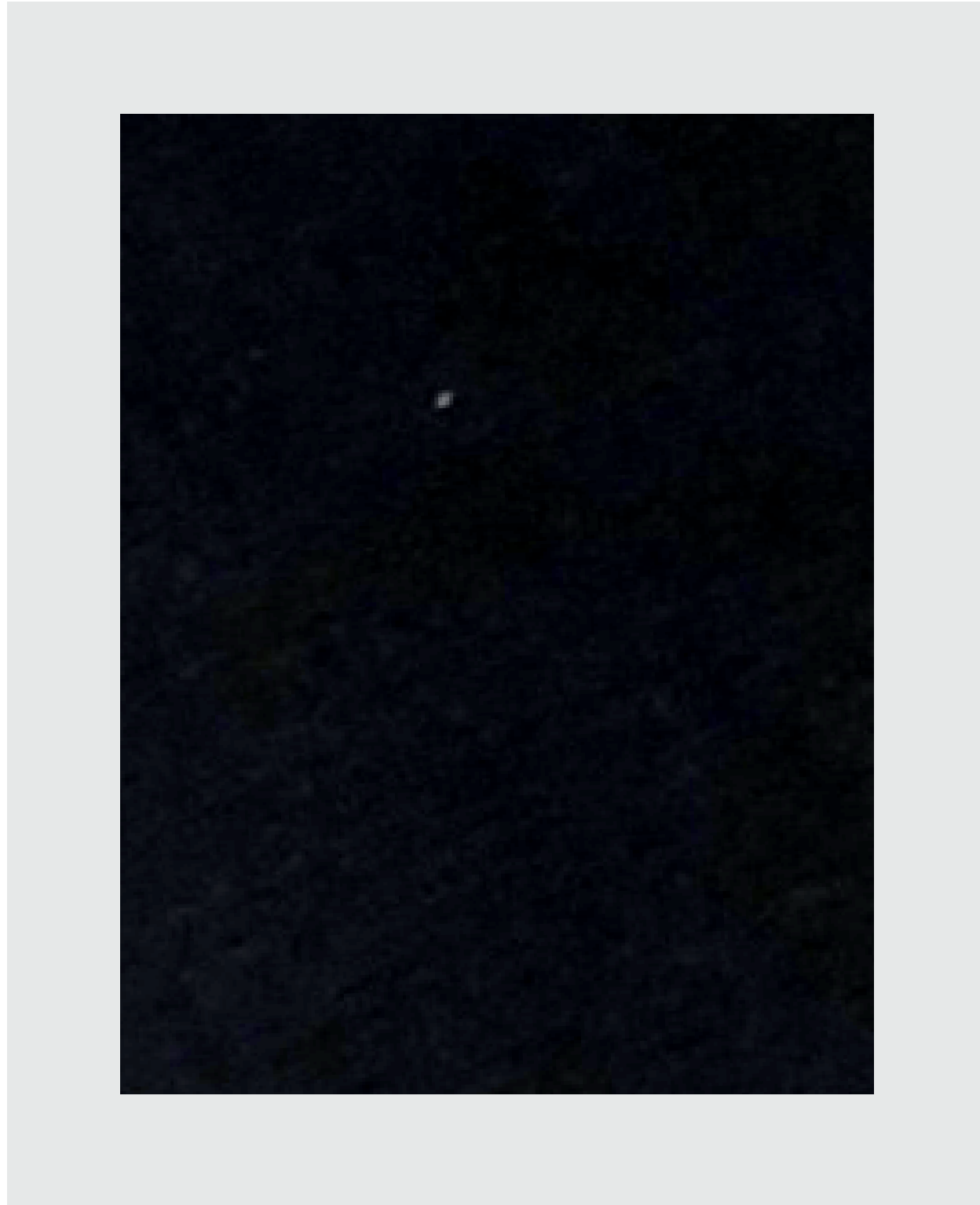
206 Super Dark (R BLUE)

CLOSET LYCRA

Width 58-60" GSM 240/250 BLEND 95% POLY 5% LYCRA STRUCTURE LOOPER

BOTTOM WEAR FABRIC

MOISTURE MANAGEMENT TREATED



CLOSET LYCRA

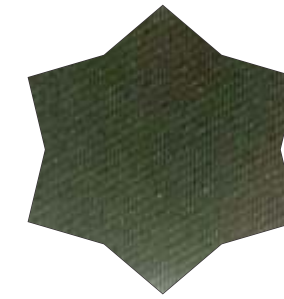
Width 58-60" GSM 240/250 BLEND 95% POLY 5% LYCRA STRUCTURE LOOPER

BOTTOM WEAR FABRIC

MOISTURE MANAGEMENT TREATED



156 Dark (ANTHRA)



158 DARK (MEHNDI)



201 Super Dark (MAROON)



203 Super Dark (NAVY BLUE)



204 Super Dark (BLACK)



206 Super Dark (R BLUE)

OSCAR

Width 58-60" GSM 220/230 BLEND 90%POLY10%LYCRA STRUCTURE SUBLIMATION

MOISTURE MANAGEMENT TREATED



OSCAR

Width 58-60" GSM 220/230 BLEND 90%POLY10%LYCRA STRUCTURE SUBLIMATION

MOISTURE MANAGEMENT TREATED

101



102



103



104



OSCAR

Width 58-60" GSM 220/230 BLEND 90%POLY10%LYCRA STRUCTURE SUBLIMATION

MOISTURE MANAGEMENT TREATED

105



106



107



108



OSCAR

Width 58-60" GSM 220/230 BLEND 90%POLY10%LYCRA STRUCTURE SUBLIMATION

MOISTURE MANAGEMENT TREATED

109



110



111



STRIPER



QUALITY : MOON ROCK
DSN NO. : 101 (R BLUE)
STRUCTURE : PIQUE
GSM : 210 - 220
CONTENT : 48-52 P/C
WIDTH / DIA : 46/48" (D)

STRIPER



QUALITY : MOON ROCK
DSN NO. : 121 (RED)
STRUCTURE : PIQUE
GSM : 210 - 220
CONTENT : 48-52 P/C
WIDTH / DIA : 46/48" (D)



QUALITY : MOON ROCK
DSN NO. : 111 (GOLD)
STRUCTURE : PIQUE
GSM : 210 - 220
CONTENT : 48-52 P/C
WIDTH / DIA : 46/48" (D)



QUALITY : MOON ROCK
DSN NO. : 131 (GREEN)
STRUCTURE : PIQUE
GSM : 210 - 220
CONTENT : 48-52 P/C
WIDTH / DIA : 46/48" (D)

STRIPER



QUALITY : MOON ROCK
DSN NO. : 102 (R BLUE)
STRUCTURE : PIQUE
GSM : 210 - 220
CONTENT : 48-52 P/C
WIDTH / DIA : 46/48" (D)

STRIPER



QUALITY : MOON ROCK
DSN NO. : 122 (RED)
STRUCTURE : PIQUE
GSM : 210 - 220
CONTENT : 48-52 P/C
WIDTH / DIA : 46/48" (D)



QUALITY : MOON ROCK
DSN NO. : 112 (GOLD)
STRUCTURE : PIQUE
GSM : 210 - 220
CONTENT : 48-52 P/C
WIDTH / DIA : 46/48" (D)



QUALITY : MOON ROCK
DSN NO. : 132 (GREEN)
STRUCTURE : PIQUE
GSM : 210 - 220
CONTENT : 48-52 P/C
WIDTH / DIA : 46/48" (D)

STRIPER



QUALITY : MOON ROCK
DSN NO. : 103 (R BLUE)
STRUCTURE : PIQUE
GSM : 210 - 220
CONTENT : 48-52 P/C
WIDTH / DIA : 46/48" (D)

STRIPER



QUALITY : MOON ROCK
DSN NO. : 123 (RED)
STRUCTURE : PIQUE
GSM : 210 - 220
CONTENT : 48-52 P/C
WIDTH / DIA : 46/48" (D)



QUALITY : MOON ROCK
DSN NO. : 113 (GOLD)
STRUCTURE : PIQUE
GSM : 210 - 220
CONTENT : 48-52 P/C
WIDTH / DIA : 46/48" (D)



QUALITY : MOON ROCK
DSN NO. : 133 (GREEN)
STRUCTURE : PIQUE
GSM : 210 - 220
CONTENT : 48-52 P/C
WIDTH / DIA : 46/48" (D)

STRIPER



QUALITY : MOON ROCK
DSN NO. : 151
STRUCTURE : PIQUE
GSM : 210 - 220
CONTENT : 48-52 P/C
WIDTH / DIA : 46/48" (D)

STRIPER



QUALITY : MOON ROCK
DSN NO. : 156
STRUCTURE : PIQUE
GSM : 210 - 220
CONTENT : 48-52 P/C
WIDTH / DIA : 46/48" (D)



QUALITY : MOON ROCK
DSN NO. : 155
STRUCTURE : PIQUE
GSM : 210 - 220
CONTENT : 48-52 P/C
WIDTH / DIA : 46/48" (D)



QUALITY : MOON ROCK
DSN NO. : 157
STRUCTURE : PIQUE
GSM : 210 - 220
CONTENT : 48-52 P/C
WIDTH / DIA : 46/48" (D)

STRIPER



QUALITY : MOON ROCK
DSN NO. : 158
STRUCTURE : PIQUE
GSM : 210 - 220
CONTENT : 48-52 P/C
WIDTH / DIA : 46/48" (D)

STRIPER



QUALITY : MOON ROCK
DSN NO. : 160
STRUCTURE : PIQUE
GSM : 210 - 220
CONTENT : 48-52 P/C
WIDTH / DIA : 46/48" (D)



QUALITY : MOON ROCK
DSN NO. : 159
STRUCTURE : PIQUE
GSM : 210 - 220
CONTENT : 48-52 P/C
WIDTH / DIA : 46/48" (D)

STRIPER



QUALITY : MOON LIGHT
DSN NO. : 301
STRUCTURE : PIQUE
GSM : 210 - 220
CONTENT : 48-52 P/C
WIDTH / DIA : 54/55"(D)

STRIPER



QUALITY : STAR ZONE
DSN NO. : 401
STRUCTURE : PIQUE
GSM : 210 - 220
CONTENT : 48-52 P/C
WIDTH / DIA : 55/56"(D)



QUALITY : MOON LIGHT
DSN NO. : 302
STRUCTURE : PIQUE
GSM : 210 - 220
CONTENT : 48-52 P/C
WIDTH / DIA : 54/55"(D)



CAPTAIN (COLLAR)
(P/C) (48/52 P/C)

| COLLAR SIZE | | CUFF SIZE | |
|-------------|-----------|-----------|-----------|
| 12 X 3.25 | 15 X 3.50 | 18 X 1.25 | 26 X 1.25 |
| 13 X 3.25 | 16 X 3.50 | 20 X 1.25 | 28 X 1.25 |
| 14 X 3.25 | 17 X 3.50 | 22 X 1.25 | 28 X 1.25 |

NOTE : The said collars are made as per order.
MOQ : Min 200pc / Shade.



CAP TIP (COLLAR)
(P/C) (48/52 P/C)

| COLLAR SIZE | | CUFF SIZE | |
|-------------|-----------|-----------|-----------|
| 12 X 3.25 | 15 X 3.50 | 18 X 1.25 | 26 X 1.25 |
| 13 X 3.25 | 16 X 3.50 | 20 X 1.25 | 28 X 1.25 |
| 14 X 3.25 | 17 X 3.50 | 22 X 1.25 | 28 X 1.25 |

NOTE : The said collars are made as per order.
MOQ : Min 200pc / Shade.



PRIMARY (COLLAR)
(Y/D) (100% POLY)

| COLLAR SIZE | | CUFF SIZE | |
|-------------|-----------|-----------|-----------|
| 12 X 3.25 | 15 X 3.50 | 18 X 1.25 | 26 X 1.25 |
| 13 X 3.25 | 16 X 3.50 | 20 X 1.25 | 28 X 1.25 |
| 14 X 3.25 | 17 X 3.50 | 22 X 1.25 | 28 X 1.25 |

NOTE : The said collars are made as per order.
MOQ : Min 200pc / Shade.



PRIME TIP (COLLAR)
(Y/D) (100% POLY)

| COLLAR SIZE | | CUFF SIZE | |
|-------------|-----------|-----------|-----------|
| 12 X 3.25 | 15 X 3.50 | 18 X 1.25 | 26 X 1.25 |
| 13 X 3.25 | 16 X 3.50 | 20 X 1.25 | 28 X 1.25 |
| 14 X 3.25 | 17 X 3.50 | 22 X 1.25 | 28 X 1.25 |

NOTE : The said collars are made as per order.
MOQ : Min 200pc / Shade.



JACK (COLLAR)
(100% POLY)

| COLLAR SIZE | | CUFF SIZE | |
|-------------|-----------|-----------|-----------|
| 12 X 3.25 | 15 X 3.50 | 18 X 1.25 | 26 X 1.25 |
| 13 X 3.25 | 16 X 3.50 | 20 X 1.25 | 28 X 1.25 |
| 14 X 3.25 | 17 X 3.50 | 22 X 1.25 | 28 X 1.25 |

NOTE : The said collars are made as per order.
MOQ : Min 200pc / Shade.



JOHN (COLLAR)
(100% POLY)

| COLLAR SIZE | | CUFF SIZE | |
|-------------|-----------|-----------|-----------|
| 12 X 3.25 | 15 X 3.50 | 18 X 1.25 | 26 X 1.25 |
| 13 X 3.25 | 16 X 3.50 | 20 X 1.25 | 28 X 1.25 |
| 14 X 3.25 | 17 X 3.50 | 22 X 1.25 | 28 X 1.25 |

NOTE : The said collars are made as per order.
MOQ : Min 200pc / Shade.



TUSK (COLLAR)
(100% POLY)

| COLLAR SIZE | | CUFF SIZE | |
|-------------|-----------|-----------|-----------|
| 12 X 3.25 | 15 X 3.50 | 18 X 1.25 | 26 X 1.25 |
| 13 X 3.25 | 16 X 3.50 | 20 X 1.25 | 28 X 1.25 |
| 14 X 3.25 | 17 X 3.50 | 22 X 1.25 | 28 X 1.25 |

NOTE : The said collars are made as per order.
MOQ : Min 200pc / Shade.



GUARD (COLLAR)
(100% POLY)

| COLLAR SIZE | | CUFF SIZE | |
|-------------|-----------|-----------|-----------|
| 12 X 3.25 | 15 X 3.50 | 18 X 1.25 | 26 X 1.25 |
| 13 X 3.25 | 16 X 3.50 | 20 X 1.25 | 28 X 1.25 |
| 14 X 3.25 | 17 X 3.50 | 22 X 1.25 | 28 X 1.25 |

NOTE : The said collars are made as per order.
MOQ : Min 200pc / Shade.



SUNDAY (COLLAR)
(POLY LYCRA)

| COLLAR SIZE | | CUFF SIZE | |
|-------------|-----------|-----------|-----------|
| 12 X 3.25 | 15 X 3.50 | 18 X 1.25 | 26 X 1.25 |
| 13 X 3.25 | 16 X 3.50 | 20 X 1.25 | 28 X 1.25 |
| 14 X 3.25 | 17 X 3.50 | 22 X 1.25 | 28 X 1.25 |

NOTE : The said collars are made as per order.
MOQ : Min 200pc / Shade.



FLIP FLAP (COLLAR)
(POLY LYCRA)

| COLLAR SIZE | | CUFF SIZE | |
|-------------|-----------|-----------|-----------|
| 12 X 3.25 | 15 X 3.50 | 18 X 1.25 | 26 X 1.25 |
| 13 X 3.25 | 16 X 3.50 | 20 X 1.25 | 28 X 1.25 |
| 14 X 3.25 | 17 X 3.50 | 22 X 1.25 | 28 X 1.25 |

NOTE : The said collars are made as per order.
MOQ : Min 200pc / Shade.



MINI CHECK (COLLAR)
(100% POLY)

| COLLAR SIZE | | CUFF SIZE | |
|-------------|-----------|-----------|-----------|
| 12 X 3.25 | 15 X 3.50 | 18 X 1.25 | 26 X 1.25 |
| 13 X 3.25 | 16 X 3.50 | 20 X 1.25 | 28 X 1.25 |
| 14 X 3.25 | 17 X 3.50 | 22 X 1.25 | 28 X 1.25 |

NOTE : The said collars are made as per order.
MOQ : Min 200pc / Shade.



BIRDEYE (COLLAR)
(100% POLY)

| COLLAR SIZE | | CUFF SIZE | |
|-------------|-----------|-----------|-----------|
| 12 X 3.25 | 15 X 3.50 | 18 X 1.25 | 26 X 1.25 |
| 13 X 3.25 | 16 X 3.50 | 20 X 1.25 | 28 X 1.25 |
| 14 X 3.25 | 17 X 3.50 | 22 X 1.25 | 28 X 1.25 |

NOTE : The said collars are made as per order.
MOQ : Min 200pc / Shade.



TWISTER (COLLAR)
(POLY LYCRA)

| COLLAR SIZE | | CUFF SIZE | |
|-------------|-----------|-----------|-----------|
| 12 X 3.25 | 15 X 3.50 | 18 X 1.25 | 26 X 1.25 |
| 13 X 3.25 | 16 X 3.50 | 20 X 1.25 | 28 X 1.25 |
| 14 X 3.25 | 17 X 3.50 | 22 X 1.25 | 28 X 1.25 |

NOTE : The said collars are made as per order.
MOQ : Min 200pc / Shade.

