



WITH VALJI, YOU'RE NOT JUST GETTING FABRIC,
YOU'RE GETTING THE MARK OF DISTINCTION



Quick and
Responsive
Service

Always ready to
meet your needs.



Skin-
Friendly
Fabrics

Prioritizing comfort
without compromise.



On-
Time
Delivery

Ensuring your schedule
stays on track.



Eco-
Friendly
Practices

A commitment to
a greener future.



Pilling-
Resistant
Material

Maintaining quality
wear after wear.



Ready
Stock
Availability

Catering to urgent and
seasonal requirements.



Excellent
Color
Fastness

Vibrant colors
that endure.



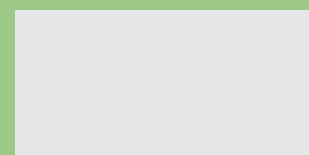
Extensive
Range
of Designs

Tailored solutions for
diverse uniform needs.

Manufacturer & Supplier Of Uniform Fabrics | Our Dealer Network Across India & Abroad



INDIA'S UNIFORM EXPERTS



**SAMAGRA SHIKSHA ASSAM SCHOOL &
P.M. SHRI SCHOOL (2025-26)
UNIFORM FABRICS DEVELOPED BY VALJI**



INTRODUCING FADE RESISTANT UNIFORM FABRICS



SSAS – Cot Touch (Tartan) – D.NO. AP 54260
SHIRTING (Boys & Girls)
Composition: 67% Polyester, 33% Cotton
Weave: Plain
GSM: 100 (Minimum)
Design: Micro 2mm Tartan Checks
Base Colour: Red – Pantone 186 C

SSAS – Heera Panna – D.NO. AP 54261
TROUSER / SKIRT SUITING (Boys & Girls)
Composition: 67% Polyester, 33% Viscose
Weave: Plain
GSM: 180 – 190
Colour: Bottle Green – Pantone 553 C

All fabrics tested in NABL – accredited lab.

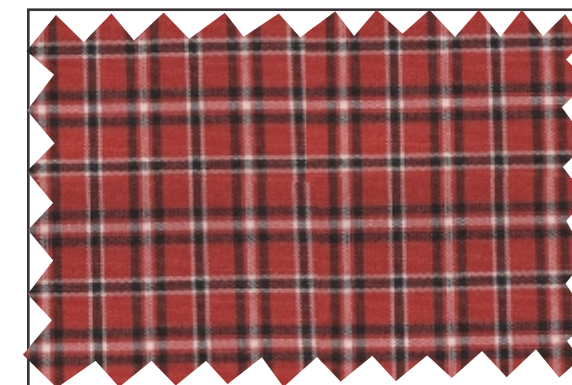
As per Assam Govt. approved standards

(PURE FABRIC)

SSAS COT TOUCH (TARTAN)
D.NO.: AP54260
147CMS (P/C) SHIRTING
(67% polyester, 33% Cotton)



SSAS DAIKIN (TARTAN)
D.NO.: AP54265
147CMS (P/C) SHIRTING
(67% polyester, 33% Cotton)



SSAS HEERA PANNA | D.NO.: AP54261
147CMS (P/V) SUITING
(67% polyester, 33% Viscose)
(SHADE - BOTTLE GREEN)





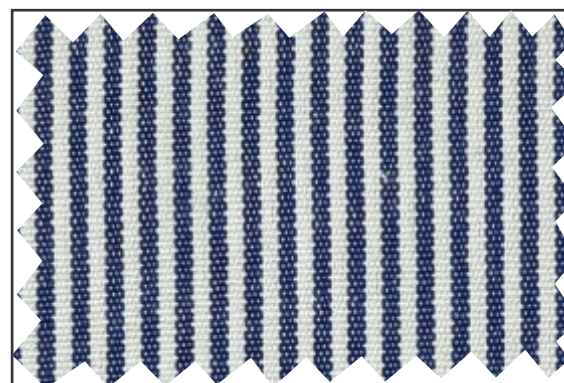
SSAS – Cot Line – D.NO. AP 54262
SHIRTING (Boys & Girls)
Composition: 67% Polyester, 33% Cotton
Weave & Pattern: Plain Weave, Vertical Blue & White Stripes
GSM: 100 (Minimum)
Colour: Blue – Pantone 277 C

SSAS – Heera Panna – D.NO. AP 54263
TROUSER / SKIRT SUITING (Boys & Girls)
Composition: 67% Polyester, 33% Viscose
Weave: Plain
GSM: 180 – 190
Colour: Deep Blue – Pantone 288 C
Tested in NABL – accredited lab.

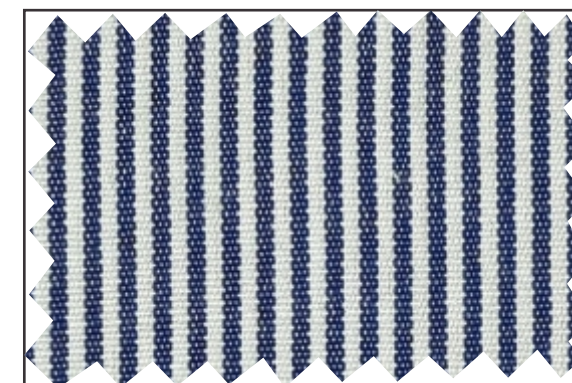
As per Assam Govt. approved standards

(PURE FABRIC)

SSAS COTLINE I D.NO.: AP54262
147CMS (P/C) SHIRTING
(67% polyester, 33% Cotton)



SSAS SQUAD LINE
D.NO.: AP54266
147CMS (P/C) SHIRTING
(67% polyester, 33% Cotton)



SSAS HEERA PANNA I D.NO.: AP54263
147CMS (P/V) SUITING
(67% polyester, 33% Viscose)
(SHADE - AIR FORCE BLUE)



SSAS SONA CHANDI I D.NO.: AP54264
147CMS (P/V) SHIRTING (FOR PAYJAMA)
(70% polyester, 30% Viscose)





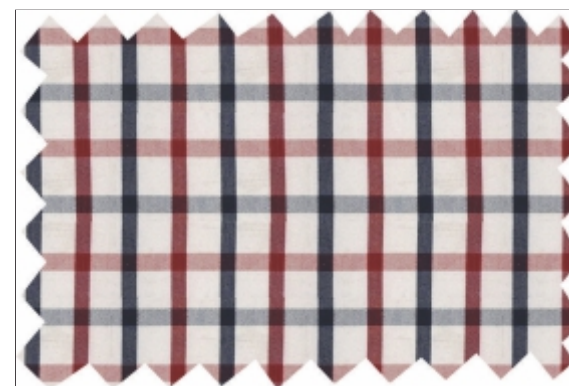
As per Assam Govt. approved standards

(PURE FABRIC)

PMSS LUNEX (TARTAN)

D.NO.: AP54269

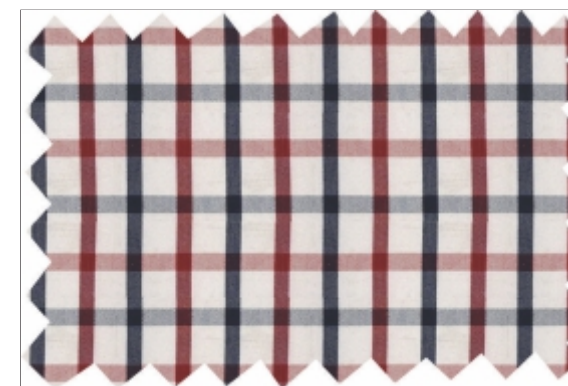
147CMS (P/C) SHIRTING
(67% Polyester, 33% Cotton)



PMSS REVIVA

D.NO.: AP54271

147CMS (P/C) SHIRTING
(67% Polyester, 33% Cotton)



PMSS HEERA PANNA

D.NO.: AP54270

147CMS (P/C) SUITING
(67% Polyester, 33% Viscose)



PMSS MAPLE

D.NO.: Ap54272

147CMS (P/V) SHIRTING (FOR PAYJAMA)
(70% Polyester, 33% Viscose)

